

# **Demographics**

## **Grace and County**

### **Path to Today**

11/3/2007

# Sources

- Grace Database
- ELCA Trend Report for Grace – 99 - 06
- Ministry Area Profile 2005 –Percept report
  - Considered a 10 mile radius from Grace
- County Development Information
  - July 2007 – Published by Chamber of Commerce
- US Census Data

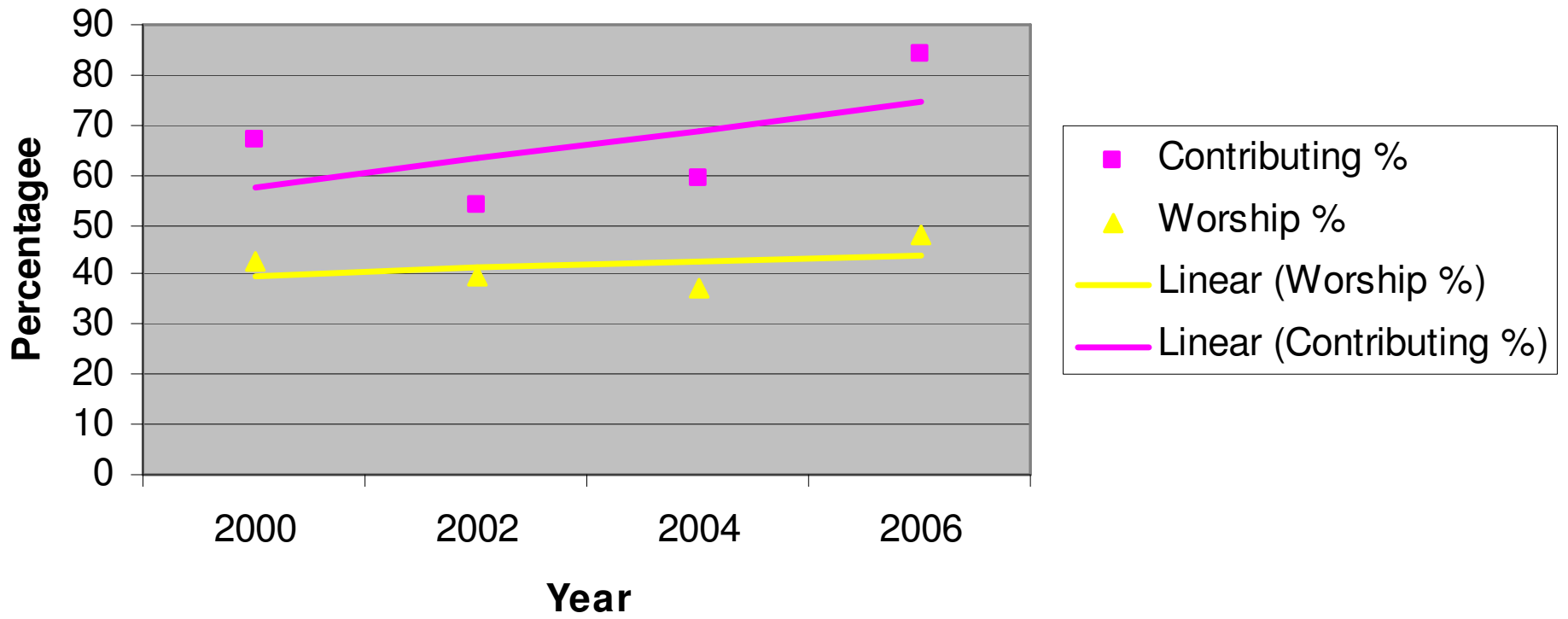
# Snap Shot of Grace Today

- 998 Baptized Members
- 62 is the median age
- 16.7% less than 20 years old
- 95 families with children
- 501 families without children
- 48 % attended Worship in 2006
- 2006 – new members- 25 Lutherans; 56 non-Lutherans

# ...More of Grace Today

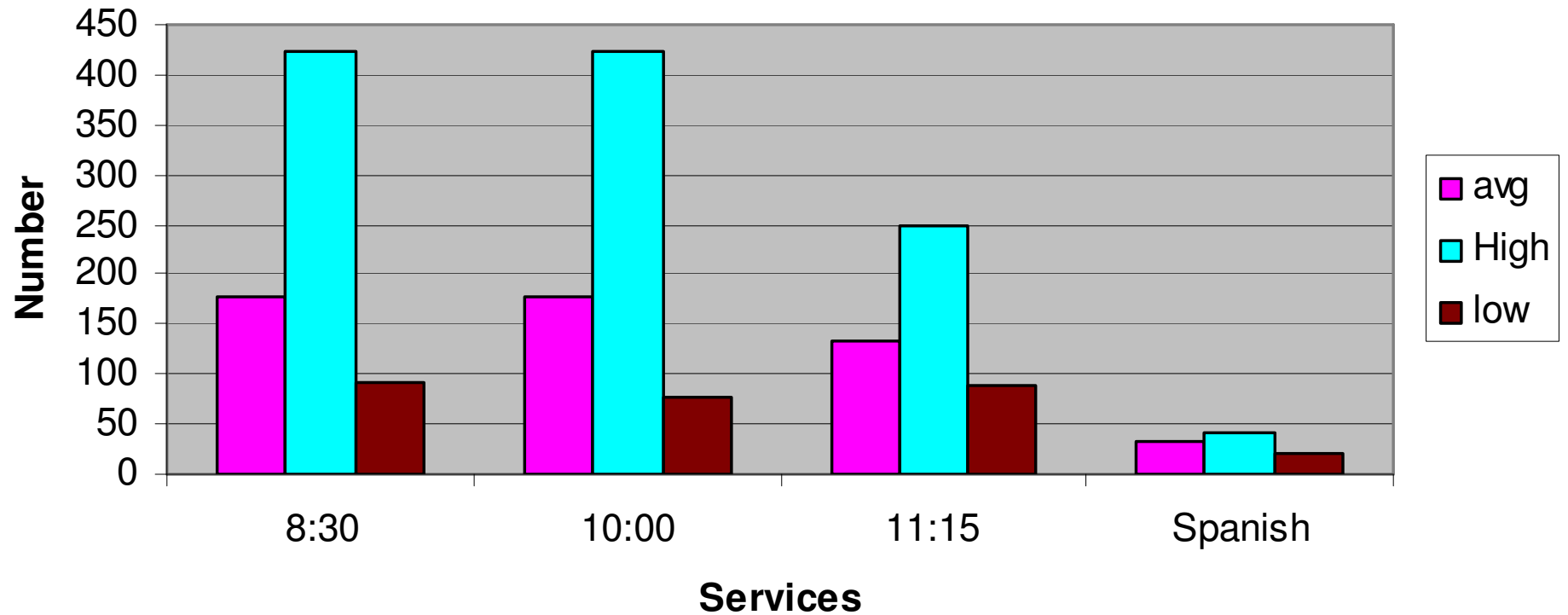
- Worship Attendance avg 501 from 99 to 05
  - Low 460 in 2005, high 544 in 1999
- Sunday School – 105 in 2003 to 91 in 2006
- High Percentage active over years
  - Over 40% attend worship on average
  - Over 80% contributing in 2006
- 52% of members have been with Grace 9 years or less.
- 84% of members have been with Grace less than 20 years.

## Grace Active Membership



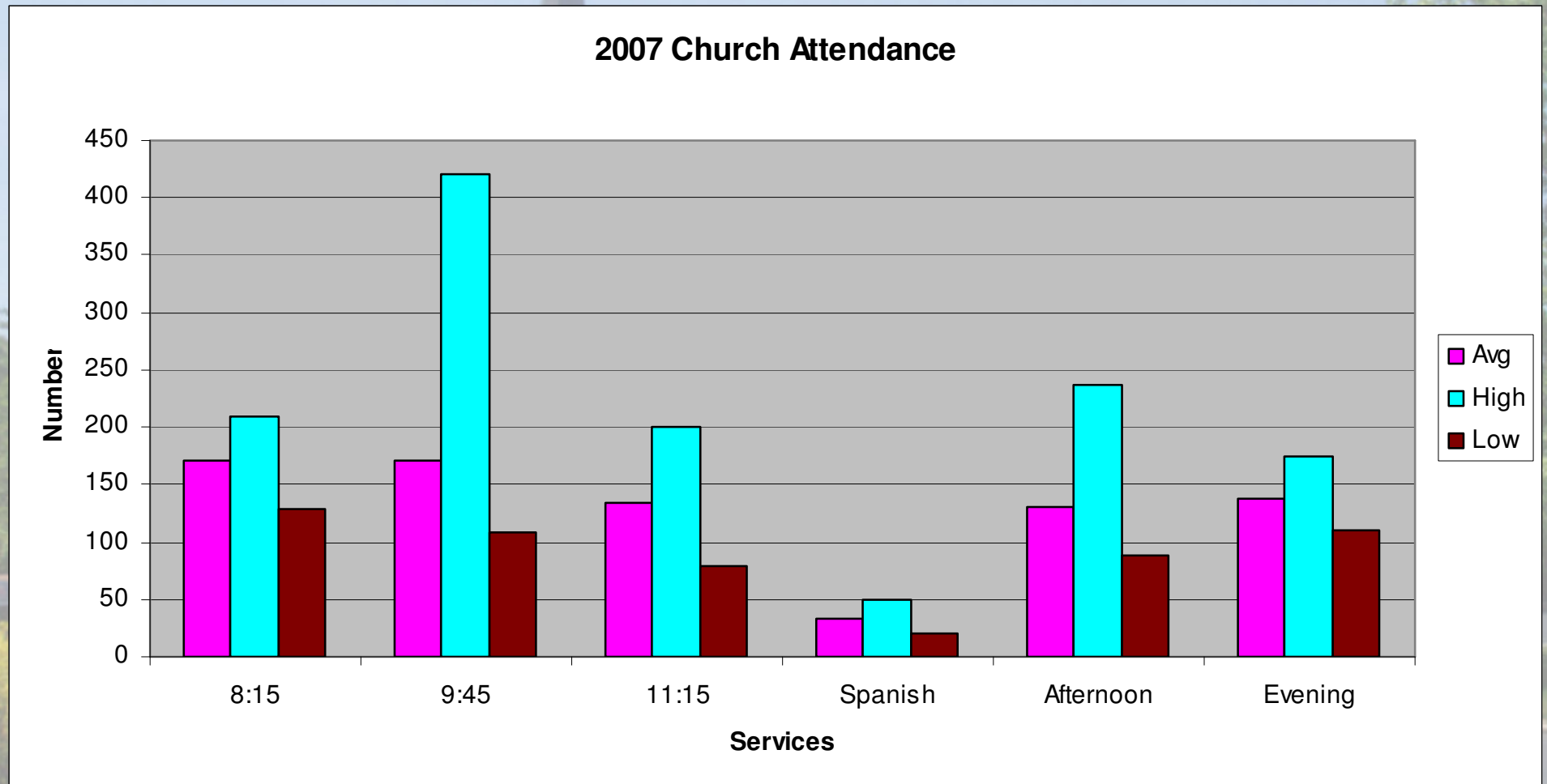
# High Attendance below 606 Capacity

## 2006 Church Attendance



# Average Attendance per service about same as prior year

## More Afternoon/Evening Activities



# Grace Trend 1999 -2006

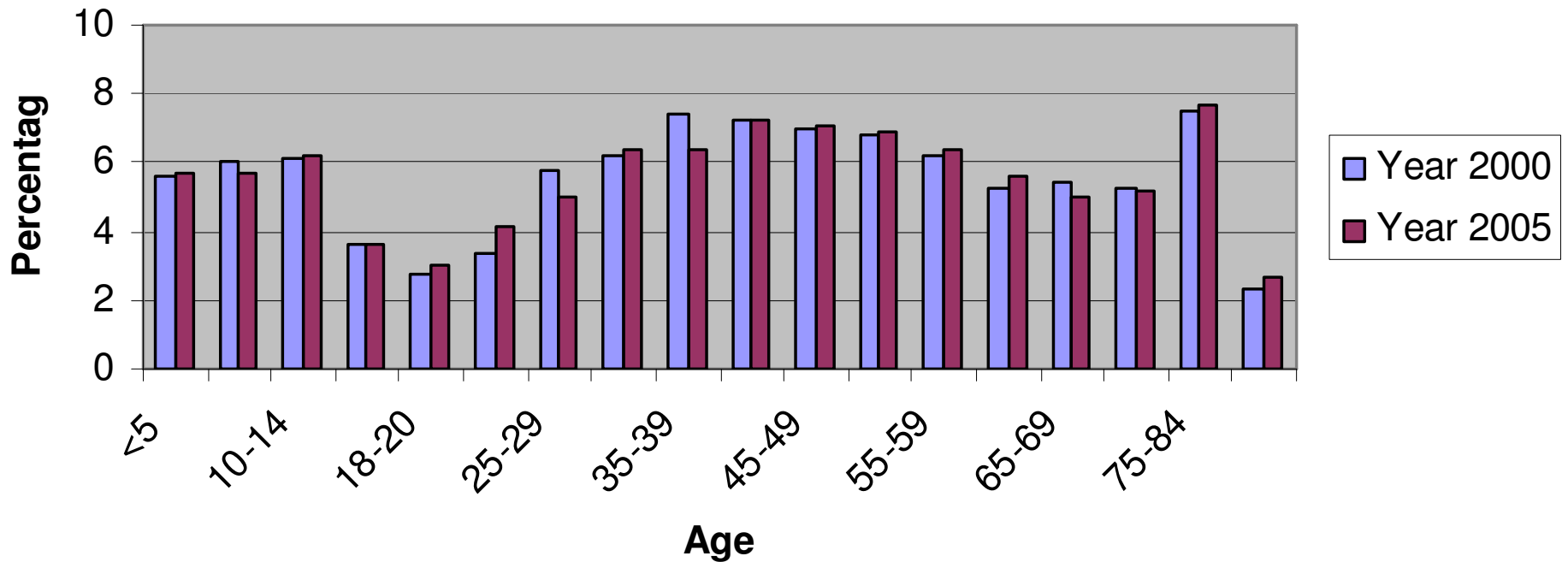
- Baptized children – 8.75/year
- Regular giving increased 20% - (or 7.8% in constant dollars)
- Designated giving met special needs

# Demographics Grace vs Local Area

<b>Statistic</b>	<b>Grace</b>	<b>Local Area</b>
<b>Median Age</b>	<b>62</b>	<b>43.3</b>
<b>% Greater 71</b>	<b>31%</b>	<b>15.6%</b>
<b>Average Age</b>	<b>54.2</b>	<b>42.3</b>
<b>Males</b>	<b>44.6%</b>	<b>48.5%</b>
<b>Females</b>	<b>55%</b>	<b>51.5%</b>

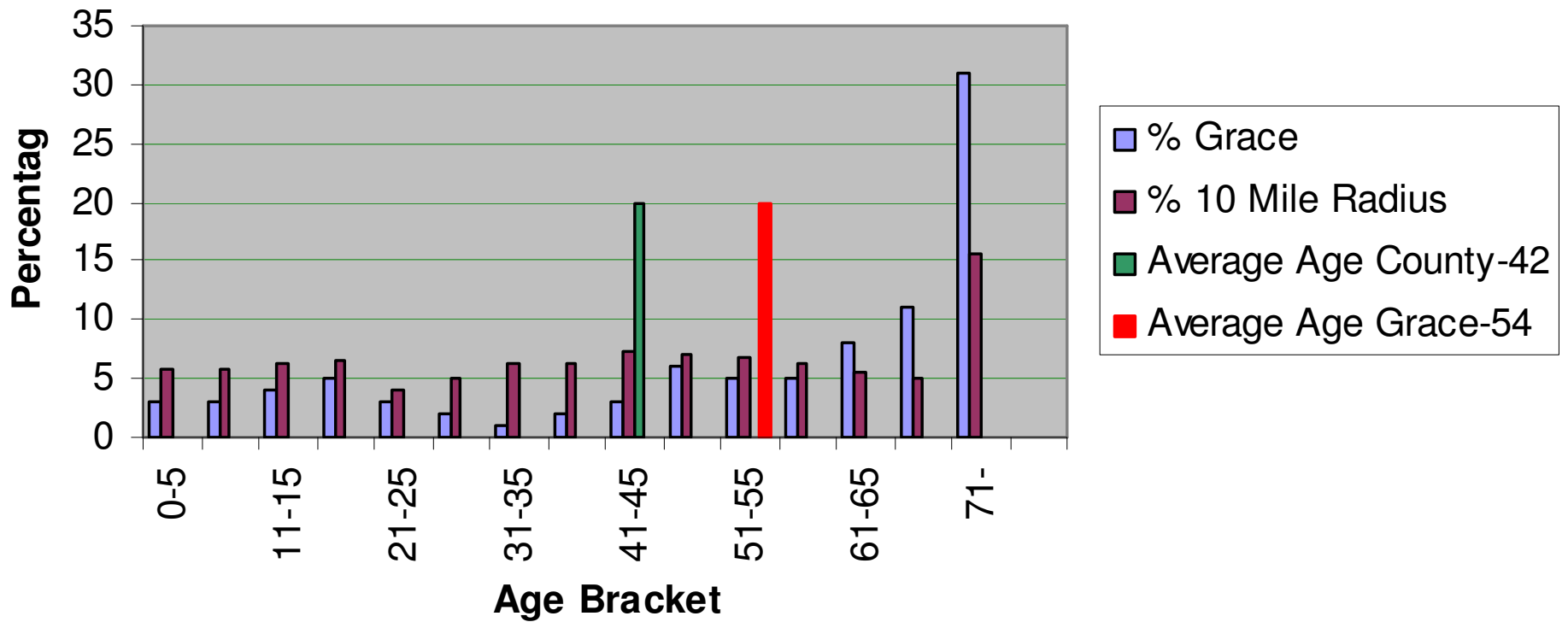
# Area Age Distribution Trend is to Older

**Population Age Distribution  
Study Area - 10 mile radius**

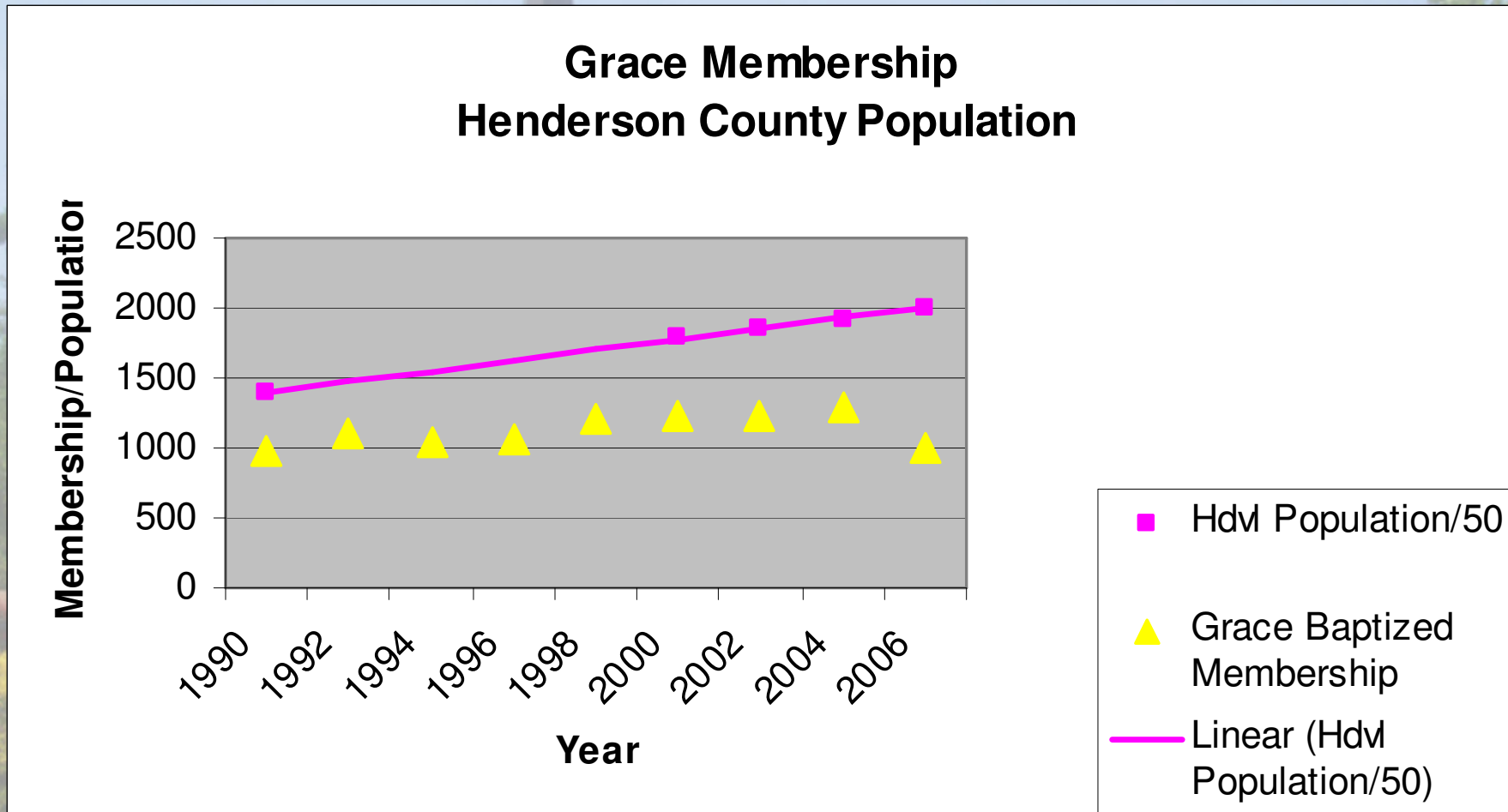


# Grace Age Distribution Significantly Older than Study Area

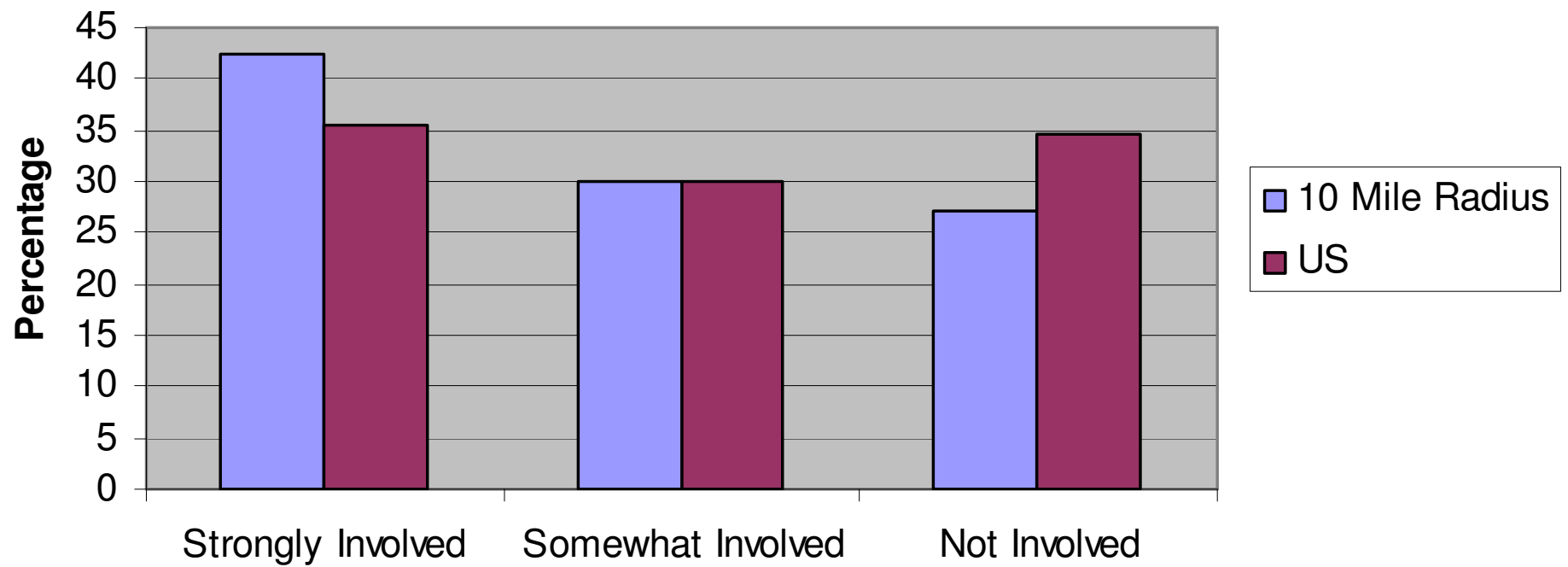
## Comparison Age Distribution Grace vs 10 Mile Radius



County Growth about 2%/year  
Grace Growth Nearly Constant  
County School Growth 1.9%/year past 5 yrs



## Faith Information Study Area vs US Average



# Conclusions from Data

- Membership nearly constant
- Membership distribution getting older
- Much higher % members participate than an average church
- Regular giving has increased more than cost of living
- Designated giving has proven to meet special needs