



# **Grace in the Future!**

## **Information to Consider in Planning**

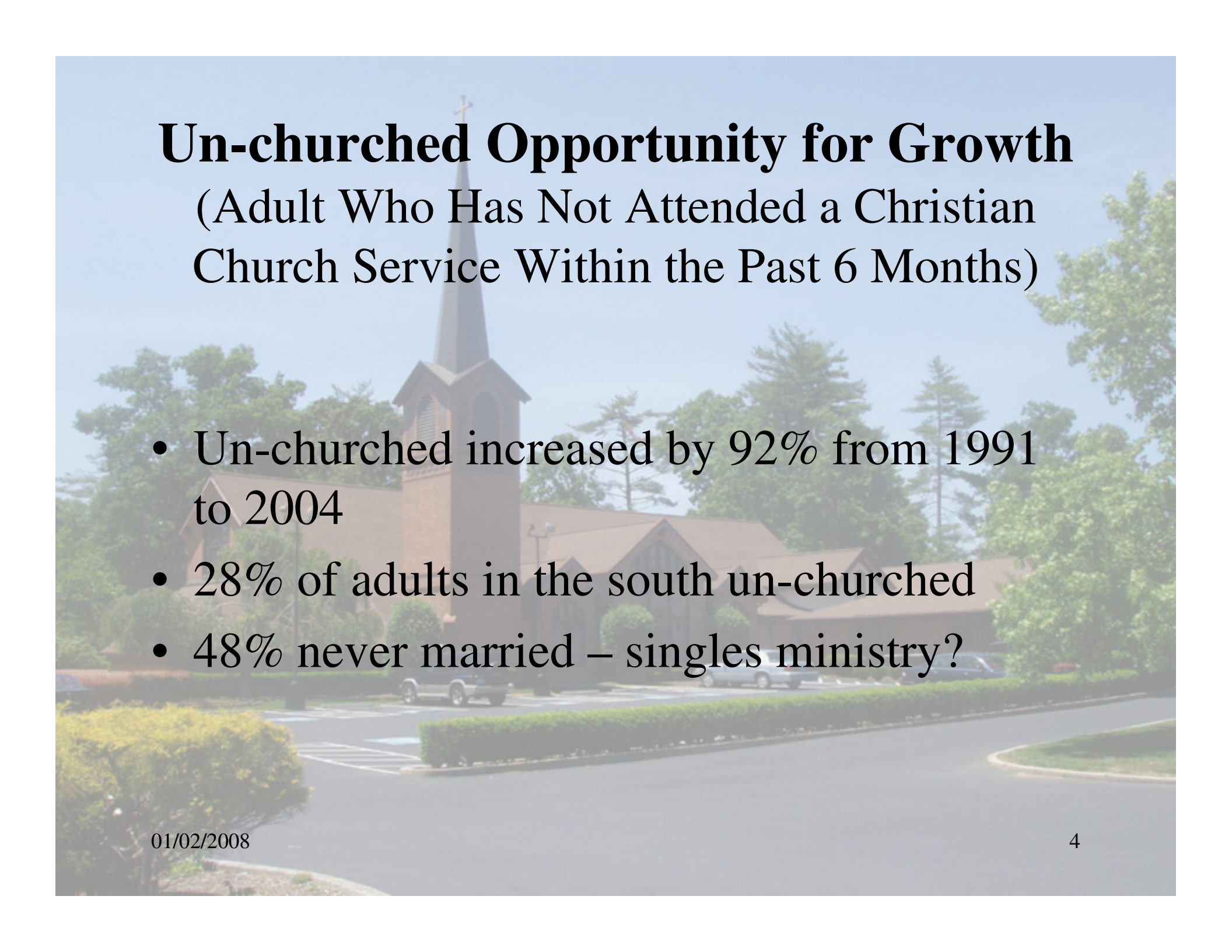
**“Think outside the box!” says Dick Opsahl**

# Demographic Projections Based Upon Following Studies

- Various ELCA studies
  - Ministry area profile studies (synod contracted Percept studies)
- Grace Lutheran studies – Hurlocker report
- Hendersonville chamber of commerce
- US Dept of Census
- All references in the “**Planning Resources**” book in the library

# Membership Challenges

- Need 95 new members annually to maintain constant membership (based upon past 8 yrs)
- County growth totally due to migration – new people relocating are a growing population
- Unchurched – growing population
- Youth – Four percent view becoming more spiritual as most important goal



# Un-churched Opportunity for Growth

(Adult Who Has Not Attended a Christian Church Service Within the Past 6 Months)

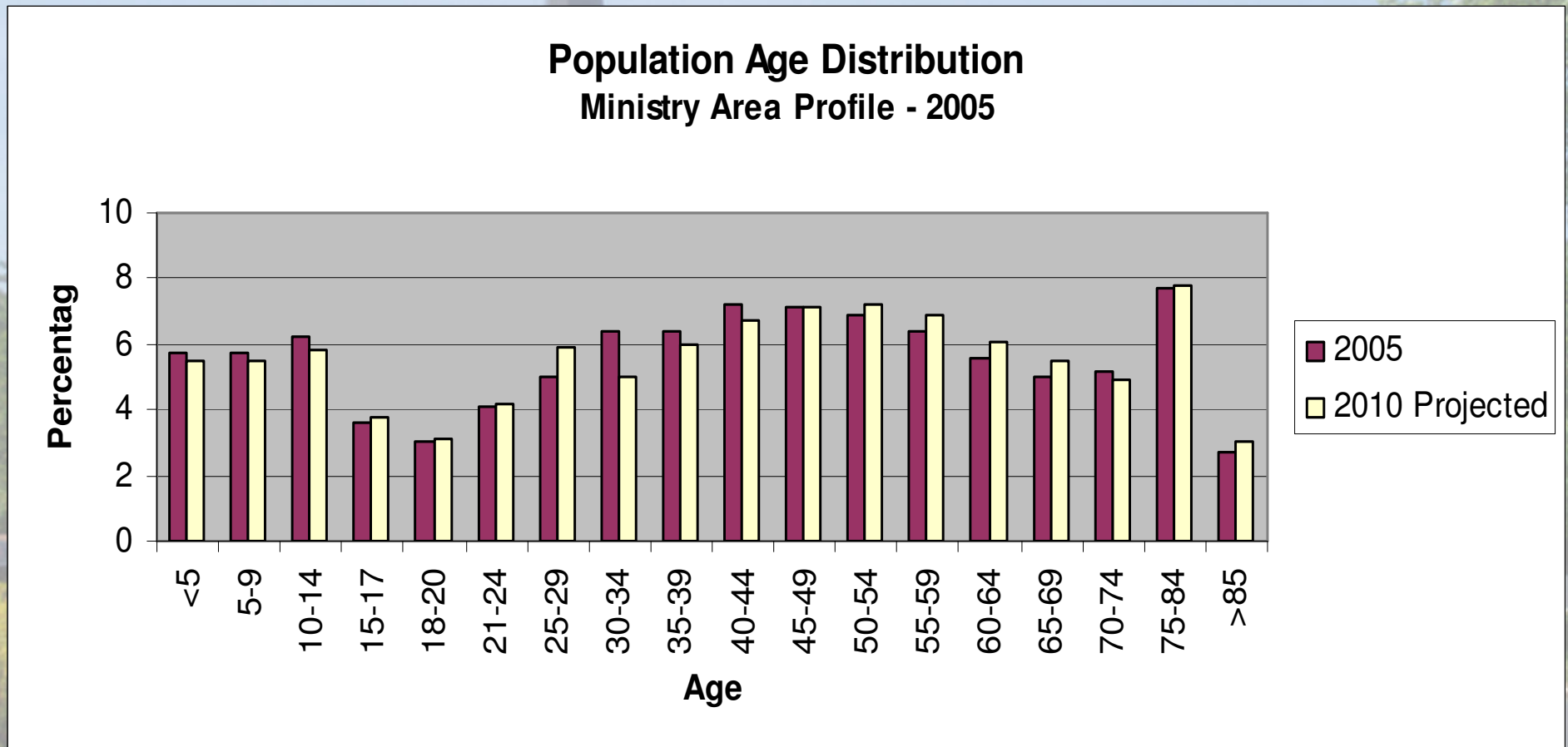
- Un-churched increased by 92% from 1991 to 2004
- 28% of adults in the south un-churched
- 48% never married – singles ministry?

# Youth – Generation Next (age 18-25)

- 20% have no religious affiliation
- Maintain close contacts with family
- Most tolerant group on social issues
- Embrace new technology – majority have used social networking like Facebook
- Group most comfortable with globalization

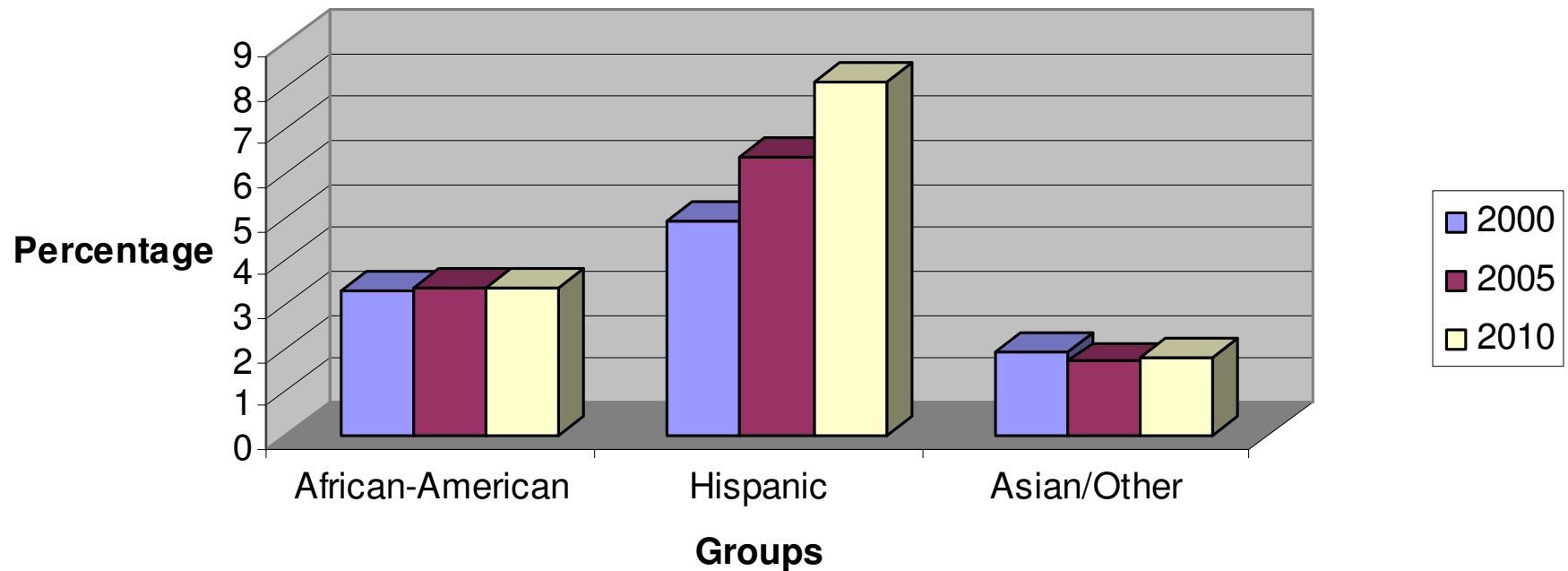
# Age Distribution Projected Constant

Differences less than 1 %



# Projected Minority Change – Mostly Hispanic

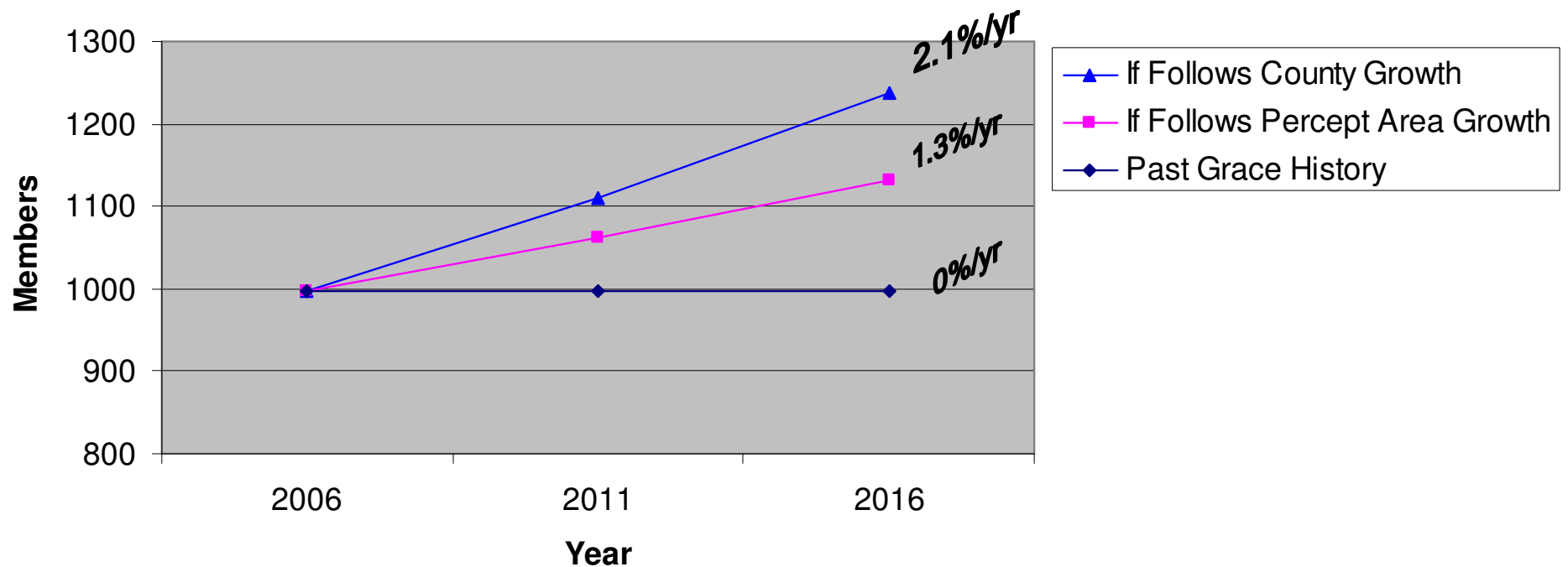
**Population by Race**  
**Ministry Area Profile - 2005**



# Net Growth Membership Projections

## Range is 0 to 20/yr

**Ten Year Projection Grace Membership  
If Correlated to History or Other Growth Studies**

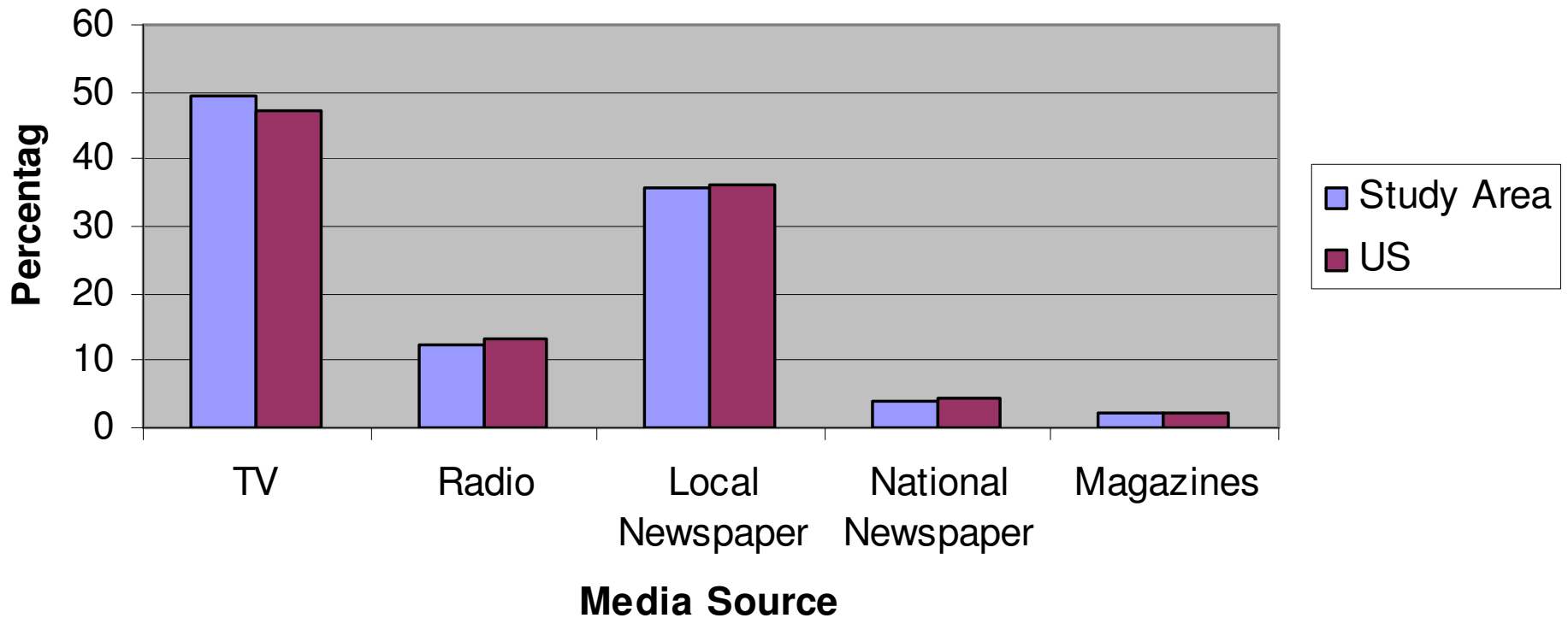


# Programmatic/religious Interests

- References include
  - Ministry area profile studies of synod
  - Published religious studies
  - Internet searches for information
  - Grace Lutheran studies – Hurlocker report
- All references in the “**Planning Resources**” book in the library

# Primary Media Preferences

Ministry Area Profile Source-Compass 2005

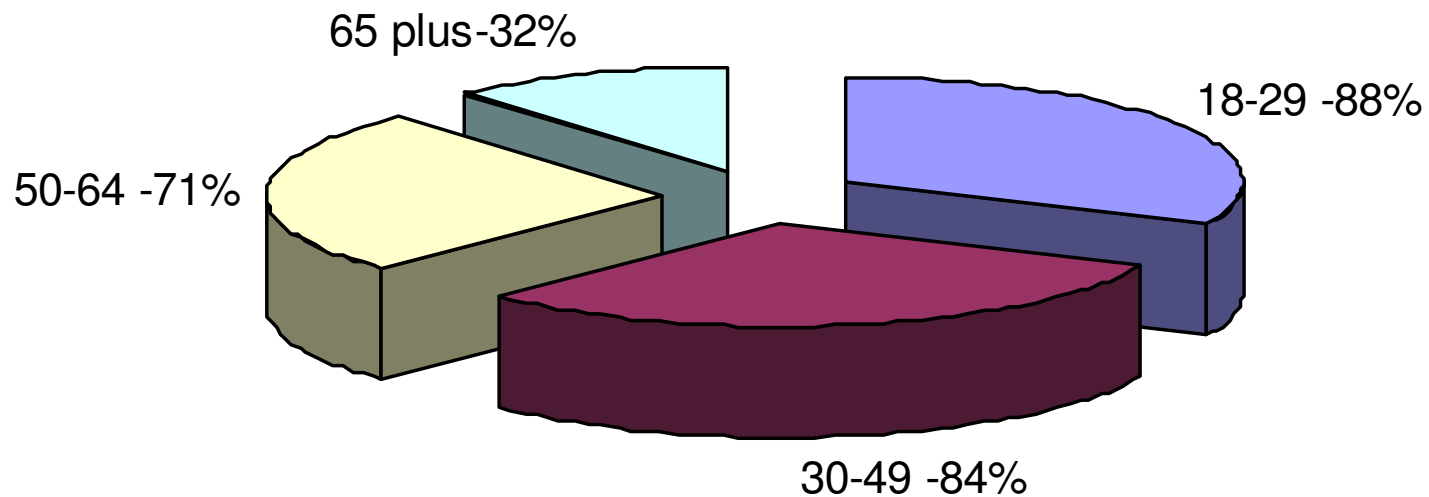


# Internet Penetration and Impact

- ***Internet penetration has now reached 73% for all American adults***
- ***Internet users note big improvements in their ability to shop and the way they pursue hobbies and personal interests online***
- **The share of online Americans who say the internet has greatly improved the way they pursue hobbies and interests has grown to 33%, up from 20% in March 2001**

# *Generations Online Report*

## Age Group Internet Use 2006 PEW/Internet Study



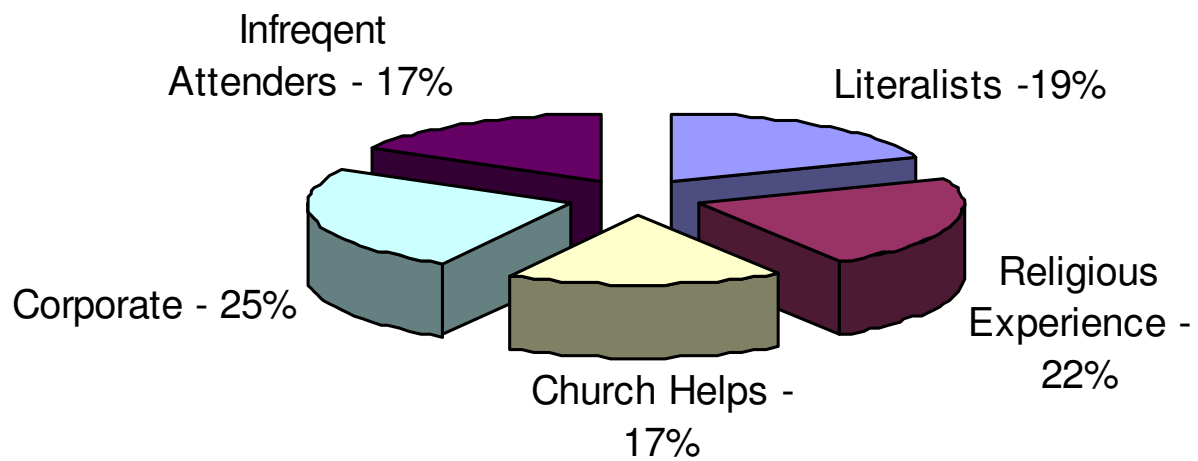
# Five Types of Lutherans

## ELCA Inskeep 2003 Paper

- **Literalists** – take literal view of Bible
- **Religious Experience** – had non-typical religious experience – like miraculous event
- **Church Helps** – believe church important to help members keep in touch with higher power
- **Corporate** – defined by high level of church involvement – not by beliefs
- **Infrequent Attenders** – less likely to practice faith

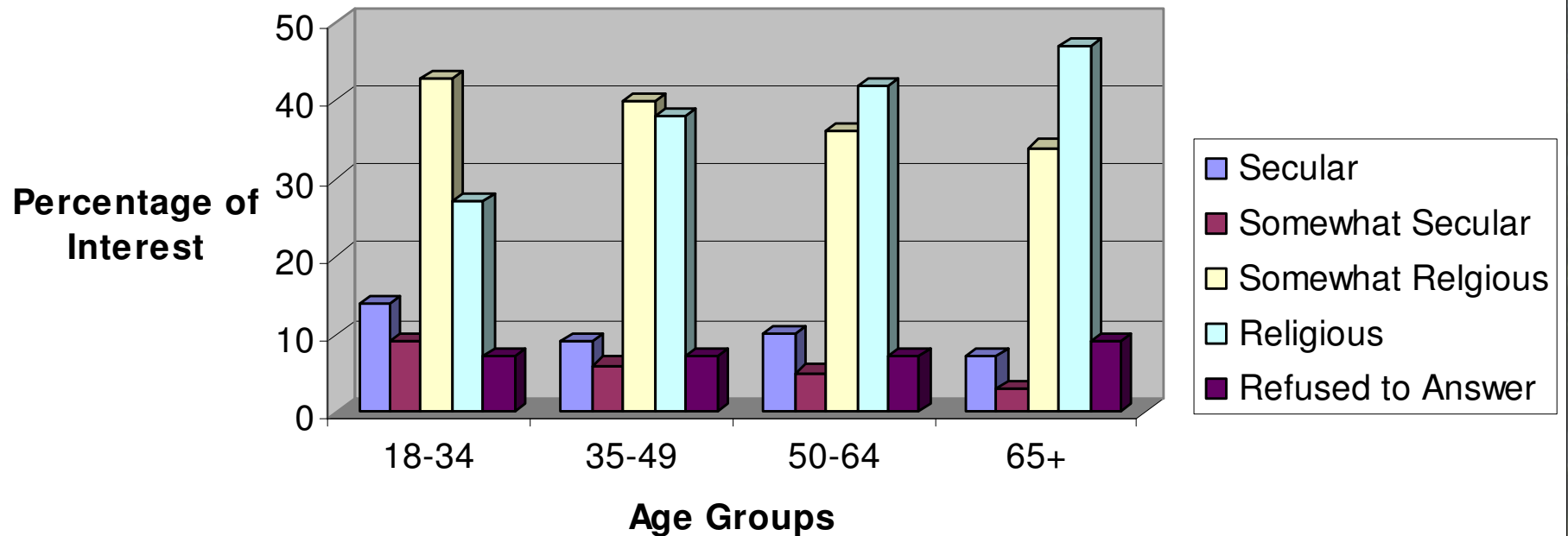
# Lutheran Interests - Focus

Types of Lutherans  
ELCA Study 2003



# Religious Interests of Age Groups

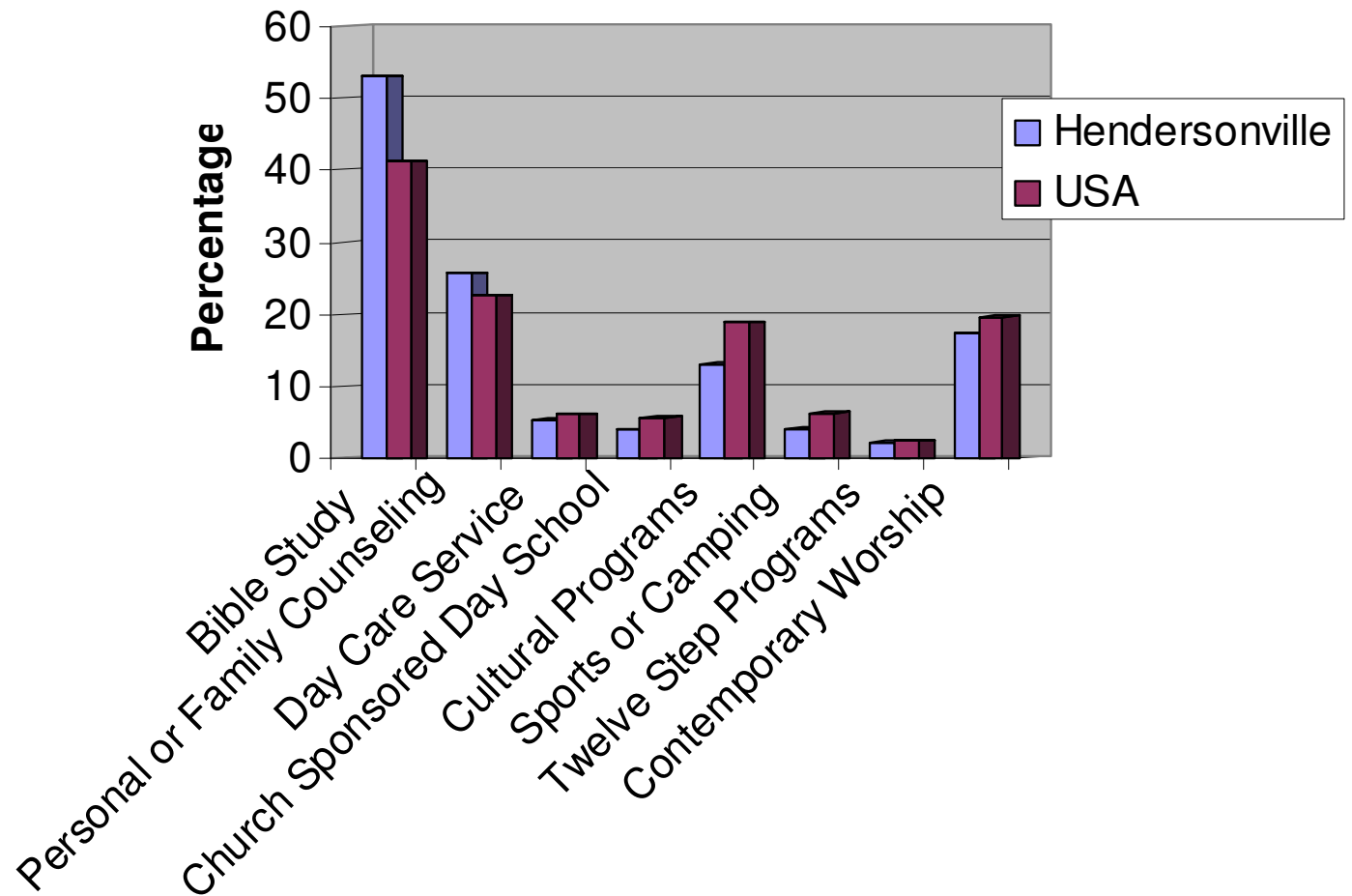
**Outlook of Adults**  
American Religious Identification Survey, 2001 (CCNY)



# Programmatic Interests

## Church Program Preference

Ministry Area Profile - Compass Report 2005



# Opportunities for Grace

## “Think outside the box!”

so sayeth Dick Opsahl

!

?



?

?

!



!

